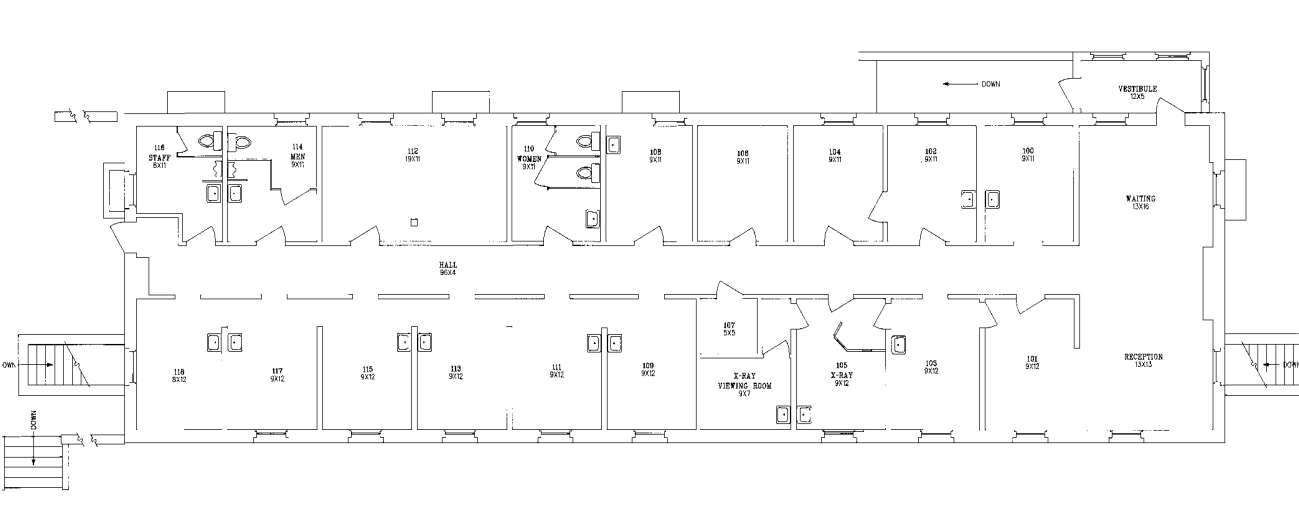


# 1610 HARDEE AVENUE

Constructed in 1898, this 9,000 sq. ft. structure was originally used as a subsistence storehouse along the eastern railroad lines, which brought in the supplies. This building was converted to a medical warehouse and later became the office for the Criminal Investigation Department. It is located within the Historic District.



Front Facade



*Disclaimer: McPherson Implementing Local Redevelopment Authority (Fort Mac LRA) does not guarantee the accuracy of any information describing the property. For additional information, contact MILRA at (404) 477-6767 or via email at [info@fortmaclra.com](mailto:info@fortmaclra.com).*