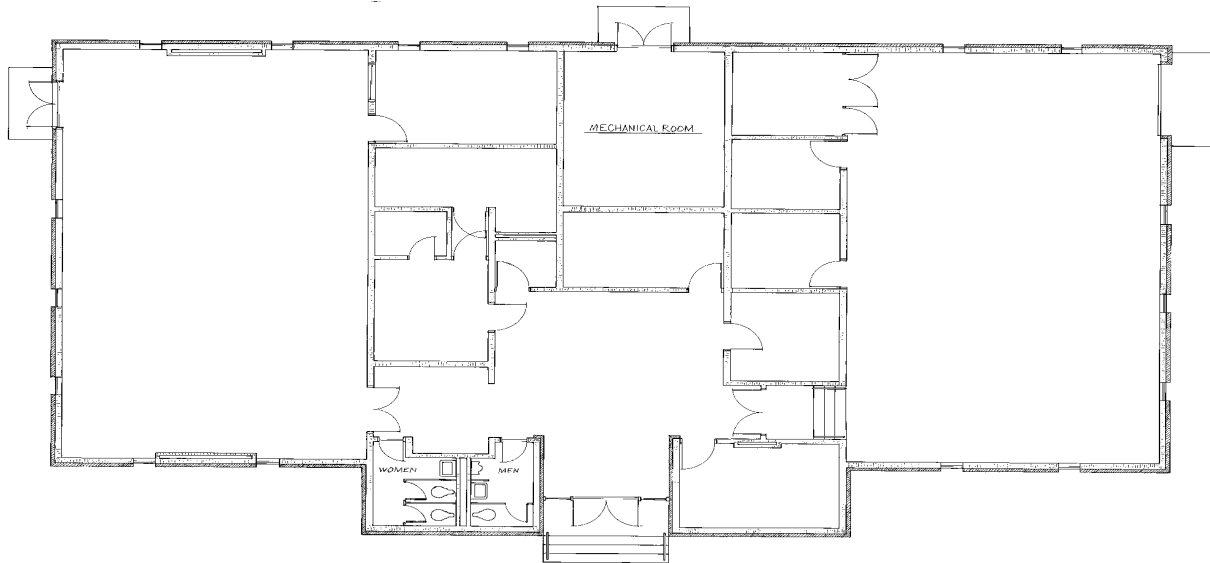


1333 THORNE AVENUE

1333 Thorne Avenue is situated within the planned Office/Medical district at Fort McPherson. This building is bounded in the north by the Associated Credit Union building, along Nininger Way and on the south by Walker Avenue. The detached, one-story, rectangular-cored, T-shaped brick building was built in 1973. It measures 5,282 sq. ft. and has the potential to house a variety of tenant types including retail, restaurants, office, leisure/activity, and flex space.



Front façade



Disclaimer: McPherson Implementing Local Redevelopment Authority (Fort Mac LRA) does not guarantee the accuracy of any information describing the property. For additional information, contact MILRA at (404) 477-6767 or via email at info@fortmaclra.com.