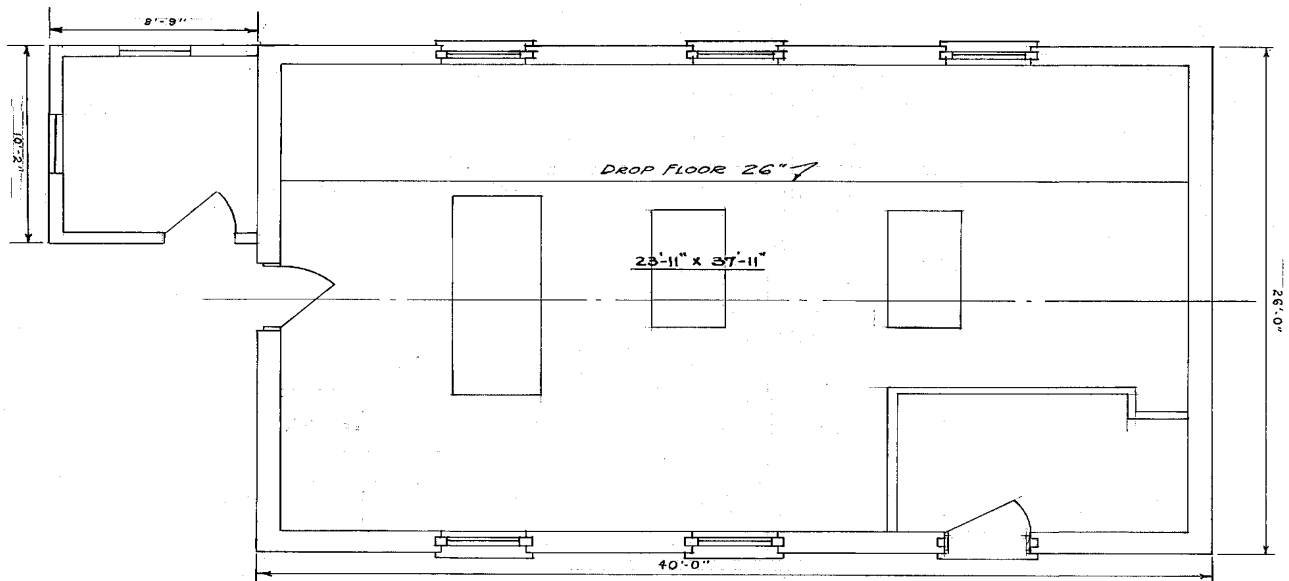


1216 HANEY PLAZA

The army has limited records of the use of this historic building constructed in 1918 as a pump house. Located within the Historic District, an addition was added to the building in 1953, bringing its total area to approximately 1,200 sq. ft. of space.



Disclaimer: McPherson Implementing Local Redevelopment Authority (Fort Mac LRA) does not guarantee the accuracy of any information describing the property. For additional information, contact MILRA at (404) 477-6767 or via email at info@fortmaclra.com.